

sunrise
energy metals

2022 ENVIRONMENTAL MONITORING RESULTS

AIR QUALITY - FEBRUARY

Published Date: 21 Mar 2022

Premises:
Sunrise Project
Wilmatha Road
Fifield, NSW, 2875

[Environment Protection Licence #21146](#)

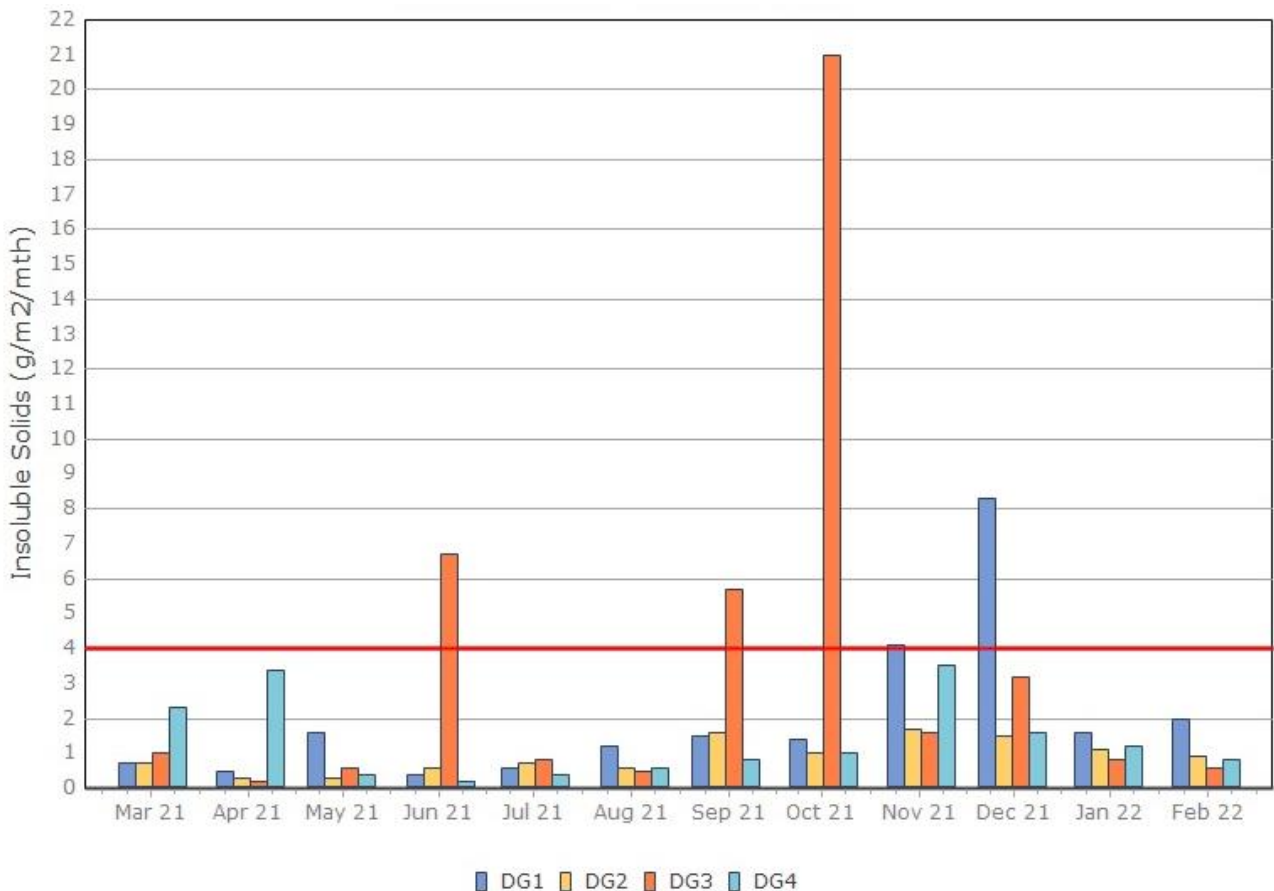
Dust Deposition

Monitoring Points:

- DG1- North West Corner of Mining Lease 1770
- DG2- Northern boundary of Mining Lease 1770
- DG3- Company Owned Residence South of Mining Lease 1770
- DG4- Adjacent the Accommodation Camp South West of Mining Lease 1770

Month	Sample Period	Results		Insoluble Solids (g/m ² /mth)			
		Received	Published	DG1	DG2	DG3	DG4
January	31/12/21 - 31/1/22	11/2/22	25/2/22	1.6	1.1	0.8	1.2
February	31/1/22 - 1/3/22	11/3/22	21/3/22	2.0	0.9	0.6	0.8
March							
April							
May							
June							
July							
August							
September							
October							
November							
December							
Average (Mean)				1.8	1.0	0.7	1.0
Median				1.8	1.0	0.7	1.0
Maximum				2.0	1.1	0.8	1.2
Minimum				1.6	0.9	0.6	0.8

Figure 1. Dust Deposition over the last 12 months with guideline criteria



Particulate Matter



Monitoring Points:

- PM2- Northern boundary of Mining Lease 1770
- PM4- Adjacent the Accommodation Camp South West of Mining Lease 1770

Figure 2. PM10 (24 hr Average) with Compliance Criteria – February 2022

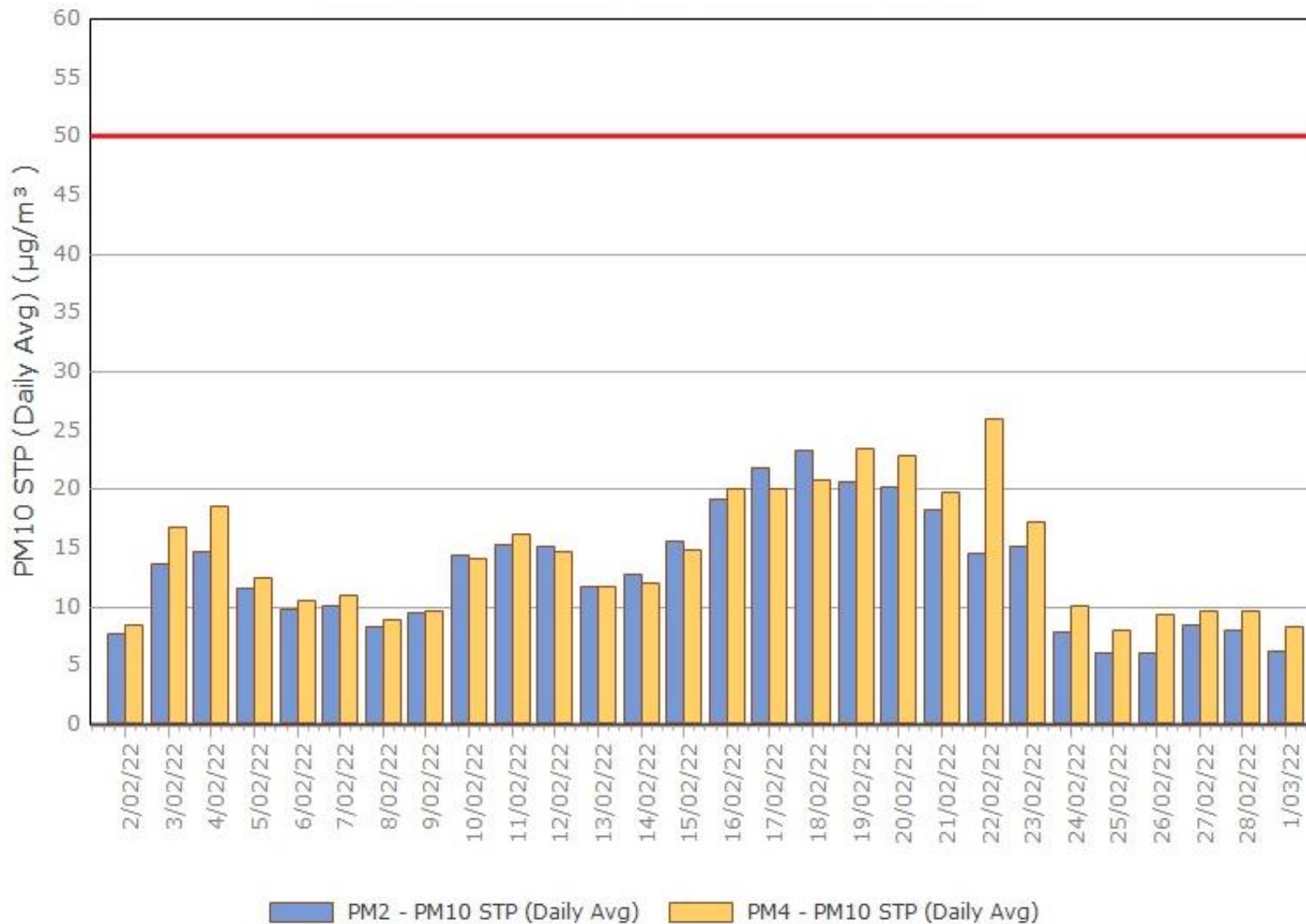
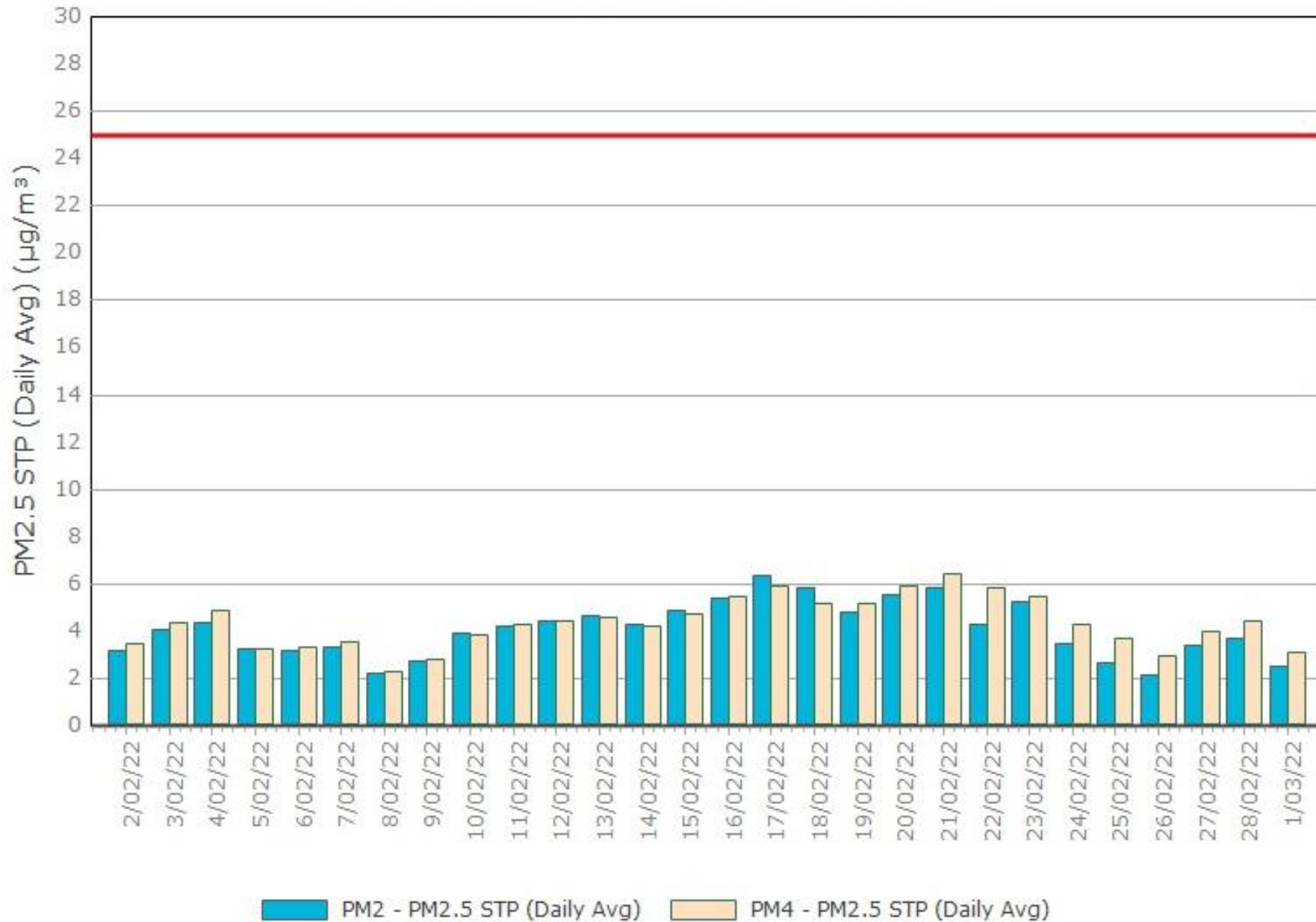


Figure 3. PM2.5 (24 hr Average) with Compliance Criteria – February 2022



APPENDIX:

Particulate Monitoring

Monthly Monitoring Results

January 2022

