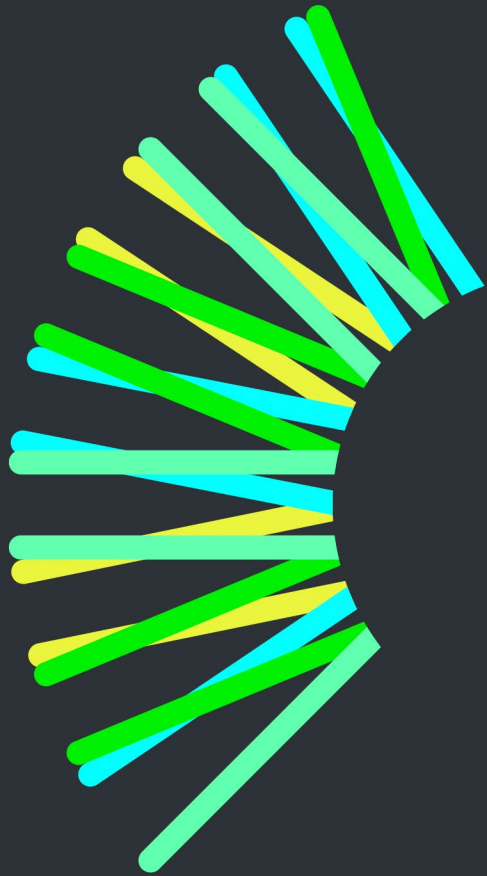


sunrise
energy metals

Sunrise Project Community Consultative Committee

24 June 2024



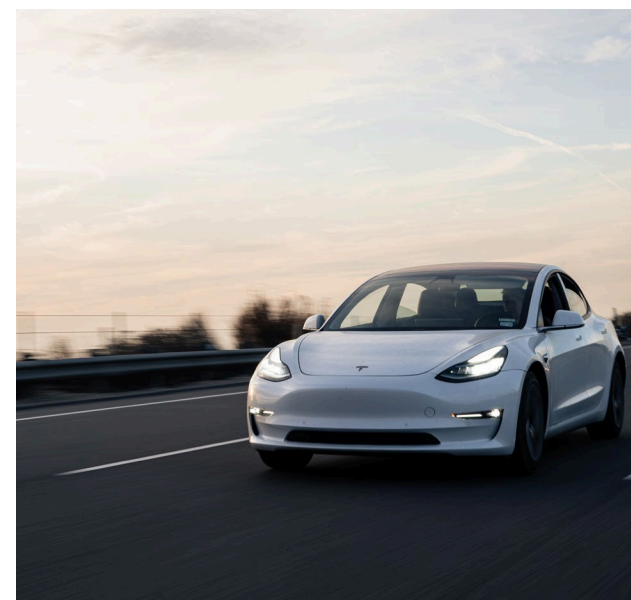


Contents

- 1 Sunrise Regional Update – Water Bores & Mineral Exploration
- 2 Community Update
- 3 Environmental Management Update
- 4 Environmental Approvals Update
- 5 Finance Update
- 6 CCC Member Questions

01

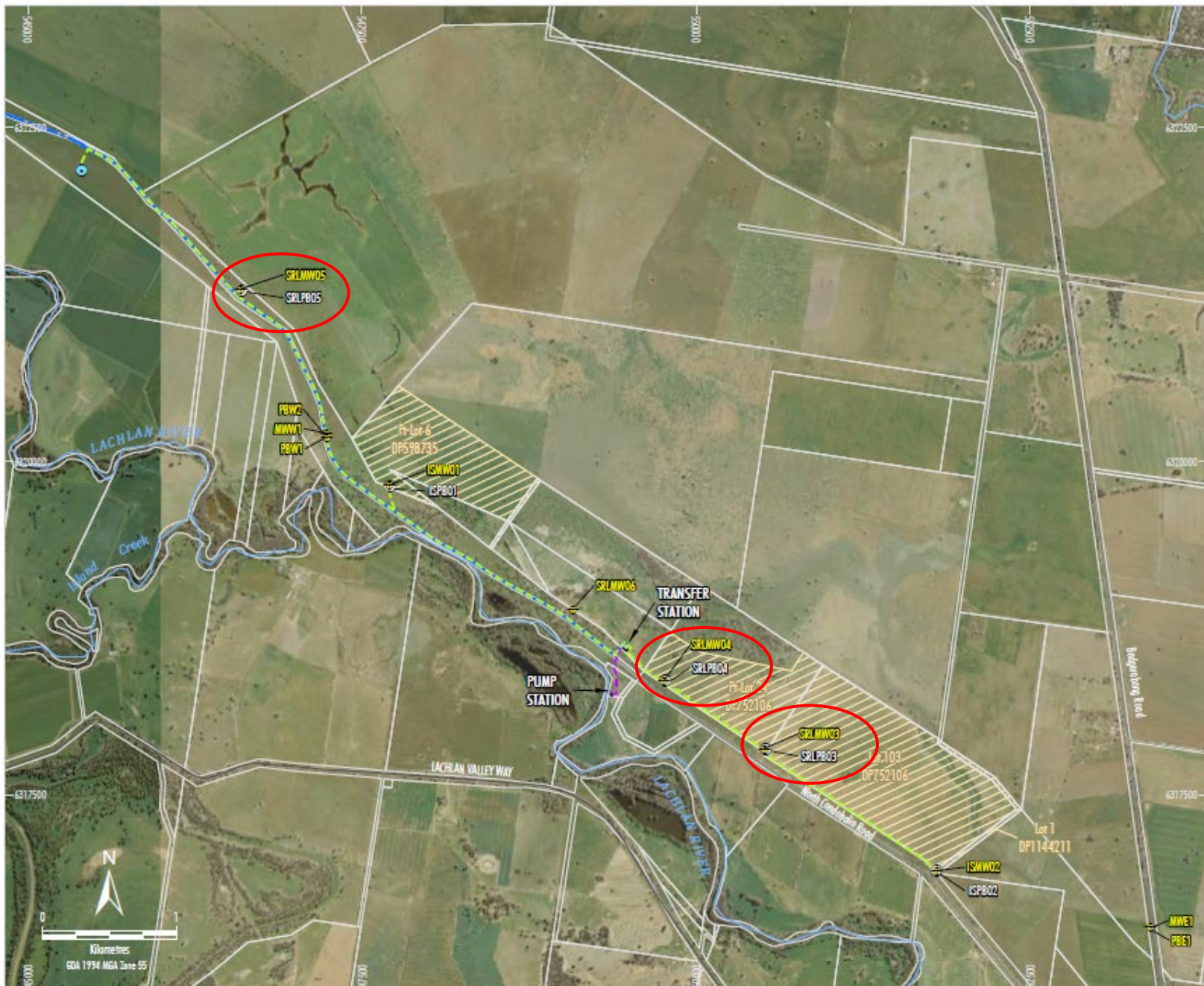
Sunrise Regional Update – Water Bores & Mineral Exploration



Water Bore Drilling – Sunrise Project Borefield

- › Sunrise completed construction of the remaining approved water bores in June 2023
- › Production bores installed in three locations:
 - Two on private land
 - One on Crown Land
- › Monitoring wells installed at three locations
- › Sites rehabilitated following installation
- › Decommissioned old 1999 bore (failed)





LEGEND

- Property Boundary
- Borefield Location
- Water Pipeline
- Borefield Infrastructure Corridor *
- Surface Water Infrastructure Corridor *
- Monitoring Bore
- Production Bore (constructed)
- Production Bore (not constructed)

* Infrastructure Corridor includes linking pipeline, access road and electricity transmission line.

Source: Sunrise Energy Metals (2021); Clean TeQ (2017, 2019); MapInfo Systerion (2005); NSW Spatial Services (2022)
Aerial Imagery: NSW Spatial Services (2021)

sunrise
energy metals

SUNRISE PROJECT

Existing Project Network
- Borefield



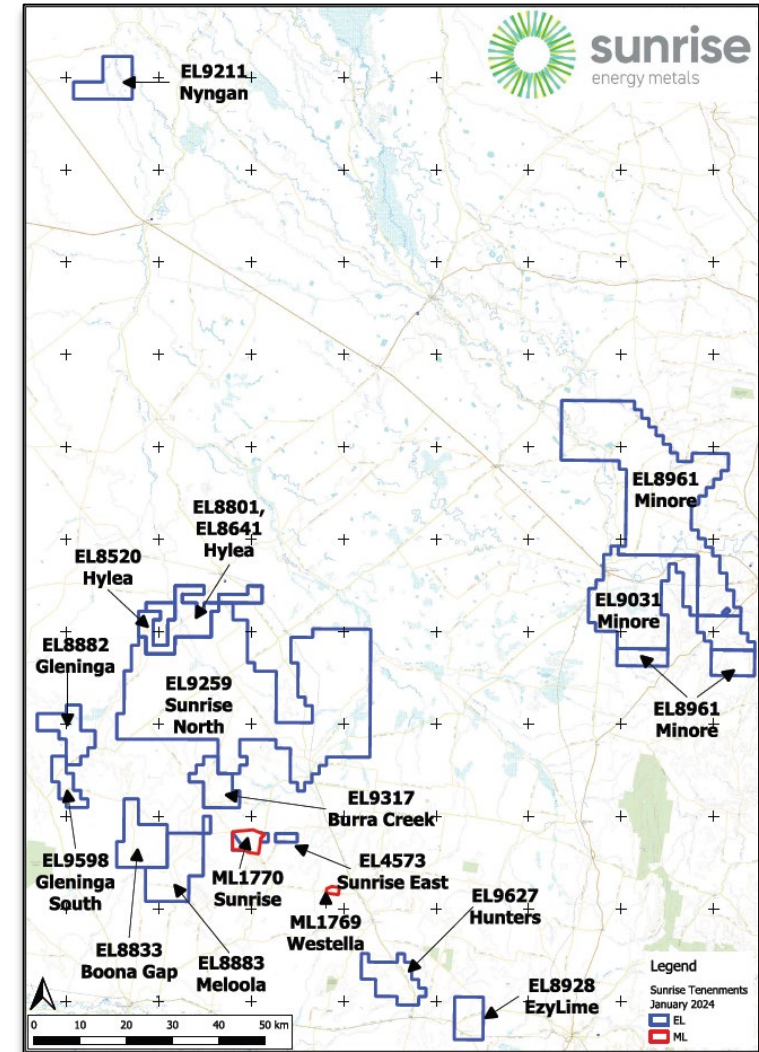
Pump Testing – Sunrise Project Borefield

- › Following production bore construction, Sunrise undertook pump testing of the bores as required by conditions of the water supply works approval
- › Pump testing completed 11-31 January 2024
 - Each bore pumped for 72 hours duration
 - Recovery water levels monitored for 48 hours
- › Monitoring wells installed at three locations
- › Sites rehabilitated following pump testing
- › Pump test results submitted to DPE Water



Mineral Exploration in the Region – Limestone

- › Reverse circulation (RC) drilling programs have been completed at our Boona Gap & Meloola tenements over the first half of 2024
- › 12 RC holes were drilled at the Boona Gap tenement and 8 RC holes at the Meloola tenement to a depth of 50-90 metres to determine the quantity and quality of limestone
- › 101 auger holes were drilled to a depth of approx. 15 metres at the Boona Gap tenement to determine the depth of cover on top of the limestone
- › Identification of a quality limestone supply closer to the Sunrise project presents opportunities to reduce trucking distances
- › Limestone exploration to continue in FY25
- › Resources Regulator conducted a desktop compliance audit of the Boona Gap tenement:
 - *Exploration code of practice: Community consultation*
 - *Exploration code of practice: Environmental management*
 - *Exploration code of practice: Rehabilitation*
- › No non-compliances were identified as a result of this audit



02

Community Update



Community – Working Together

- › Community Events
 - Supported the Trundle Back in Time event on 16th March sponsoring the dog jump
- › Preparing to support the 2024 local agricultural shows
- › Attended the NSW Minerals Council careers night in Orange on 22nd May to promote the mining industry as a career pathway for high school students
- › Attended two Local Supplier workshops (facilitated by Inland Rail) to upskill local businesses on procurement processes for large projects



Keeping People Informed

› Community Communication

- Parkes and Condobolin shopfronts are open, first and third Tuesday/Thursday of the month

› Sunrise Energy Metals website

- Complaints register published monthly, with zero complaints YTD
- Community Complaints line listed on our website – 1800 952 277

<https://www.sunriseem.com/sunrise-project/registering-a-complaint/>

Registering a complaint

Sunrise Energy Metals is committed to understanding the expectations and concerns of our stakeholders. We achieve this through open and transparent consultation and engagement. We use a range of consultation tools to build respectful relationships including individual stakeholder and public meetings, advertised community gatherings, regular newsletters and the operation of shopfronts in Condobolin and Trundle. Our team of Community Relations specialists work across our communities of influence.

In addition, we have a toll-free Community Complaints Line – available 24 hours, 7 days a week. If you have a formal complaint please call **1800 952 277** and speak with the operator. A member of our Community Relations team will respond to all calls within 24 hours or the next business day.

For all general enquiries, please contact the Sunrise Energy Metals Community Relations team at community@sunriseem.com.

Our complaints register is updated monthly.

[2019 Complaints Register](#)

[2020 Complaints Register](#)

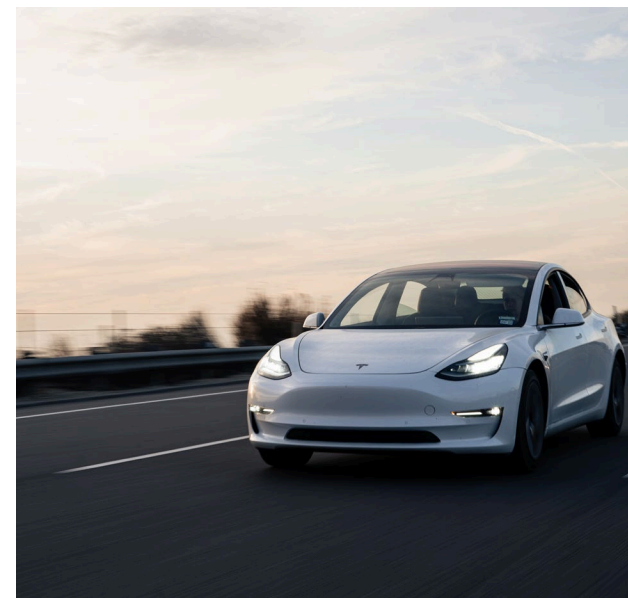
[2021 Complaints Register](#)

[2022 Complaints Register](#)

[2023 Complaints Register](#)

[2024 Complaints Register](#)

Environmental Management Update



Environmental Monitoring

- › Continuing environmental monitoring:
 - Air Quality
 - Surface Water
 - Groundwater (November and May/June)
 - Meteorological
- › Depositional dust and Particulate Matter (PM₁₀ and PM_{2.5})
- › Surface water monitoring events
 - February and May 2024
- › Groundwater monitoring
 - Next round scheduled for December 2024



Property Management

- › New boundary fences installed:
 - Wilmatha Road
 - Fifield Road
- › Weed spraying (ongoing)
- › Mining Lease under crop



04

Environmental Approvals Update



Government Reporting

- › Annual project reporting completed for 2023:
 - Annual Return to the EPA
 - 2023 Annual Review to DPE

<https://www.sunriseem.com/wp-content/uploads/2024/04/Annual-Review-2023.pdf>



Critical Asset Approvals

- › 132kV Electrical Transmission Line (ETL)
 - Connection agreement with Network Service Provider progressing including completion of the required AEMO power systems studies
 - First 40km of the ETL will replace the existing 66kV Trundle supply line with a dual 132/66 kV line
 - This will provide additional network capacity and growth opportunity in the region (ie. loads & renewables)
 - Landholder discussions continuing, external consultant engaged to assist with this process
 - Licence application over Crown Land underway



Critical Asset Approvals

› Raw Water Pipeline and Borefield

- S138 Roads Act approval and lease with the Councils was extended until March 2027
- Licence and easement application over Crown Land progressing

› Oversize Transport Route (Port Pirie to Sunrise)

- Grant Funding of \$500K received from NSW Critical Minerals and High-Tech Metals Activation Fund to undertake design and approvals activities to de-risk the oversized transport route
- GHD engaged to complete civil and electrical designs for route modifications and develop the approvals plan for the construction phase of the oversized transport route
- Designs for required route modifications completed Q2 2024
- Approvals for civil route modifications to be progressed during FY25 to derisk the overall project schedule

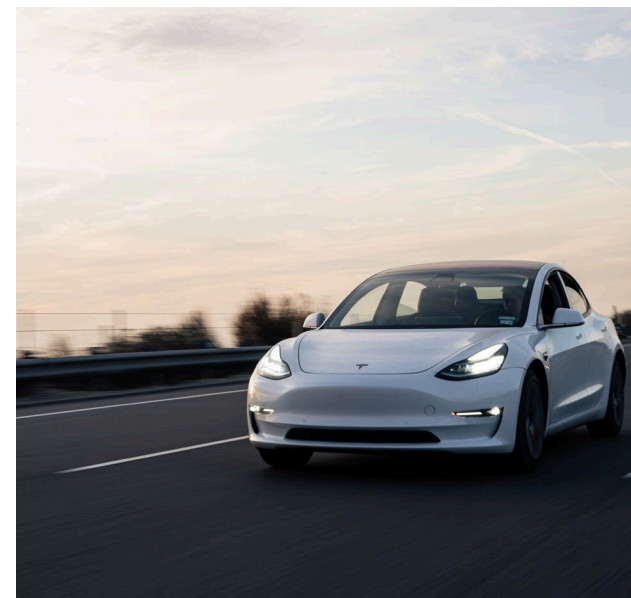
05

Finance Update



06

CCC Member Questions



Thank you



sunrise
energy metals